

# SECTOR CAPACITY BUILDING PROGRAM

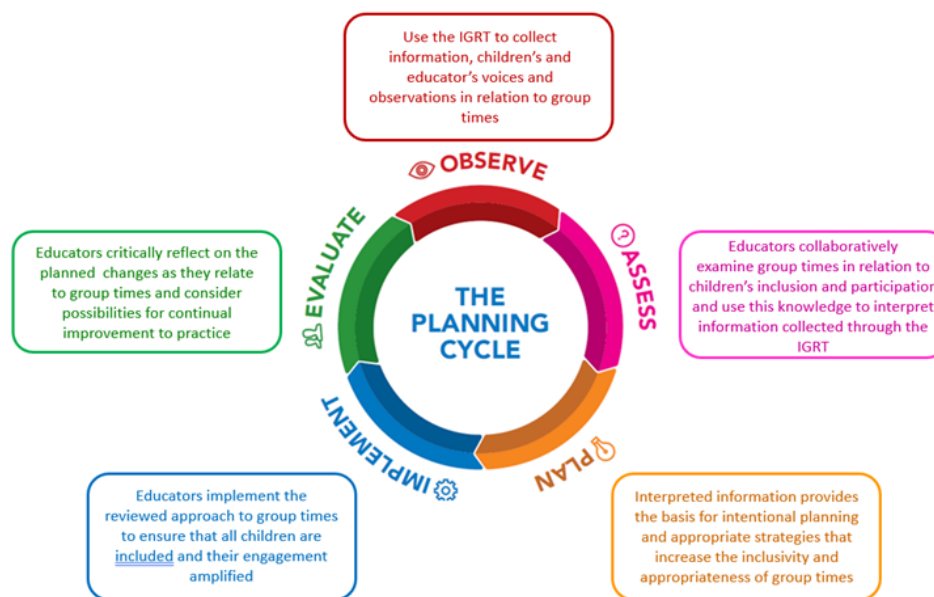
## Inclusive Group Times Reflection Tool

### Rationale

The aim of this Inclusive Group Times Reflection Tool (IGRT) is to support your educator team to observe, examine and reflect on group times in your setting to ensure they are inclusive and responsive to the needs of the children in the group. The tool should be used in conjunction with the *KU Sector Capacity Building Program Inclusive Group Times Information Sheet*.

### How to use the Inclusive Group Times Reflection Tool

This tool is designed to guide critical reflection on current practices in relation to group times and to establish a plan to implement any changes your team would like to make. Reflective questions encourage educators to consider group times from the perspective of others, including capturing and reflecting on the children's voices. The tool can be used for both small and large group times. The Inclusive Group Times Reflection Tool can be used as part of your quality improvement processes and ongoing reflection on practice. The process can be revisited to respond to the needs and strengths of individual children and changing group dynamics. Your KU Preschool Inclusion Consultant is available to support your team through this process.



# Inclusive Group Times Reflection Tool

Continued...

<b>Service Name:</b>		
<b>Room:</b>		<b>Date:</b>

Reflective Question	Response
What do your group times feel like for each child?	
What do your group times feel like for each educator?	

# Inclusive Group Times Reflection Tool

Continued...

<p><b>Are children given choice and is their right to join in, or not, respected?</b></p> <p><b>Is there flexibility in the way children can participate?</b></p>	
<p><b>What purposes do our group times serve?</b></p> <p>(Consider both large and small groups.)</p>	

# Inclusive Group Times Reflection Tool

Continued...

<p><b>Who is advantaged or disadvantaged in the way we currently offer group times?</b></p>	
<p><b>What opportunities are there for children to contribute their ideas and experiences or lead parts of group time?</b></p>	

# Inclusive Group Times Reflection Tool

Continued...

<p><b>Are our expectations appropriate for this group?</b></p> <p>(Number of group times, duration, content, etc.)</p>	
<p><b>Are our expectations realistic for individual children? How do we know this?</b></p> <p>(Consider any 'hidden messages' a child may give with their behaviours at group time.)</p>	