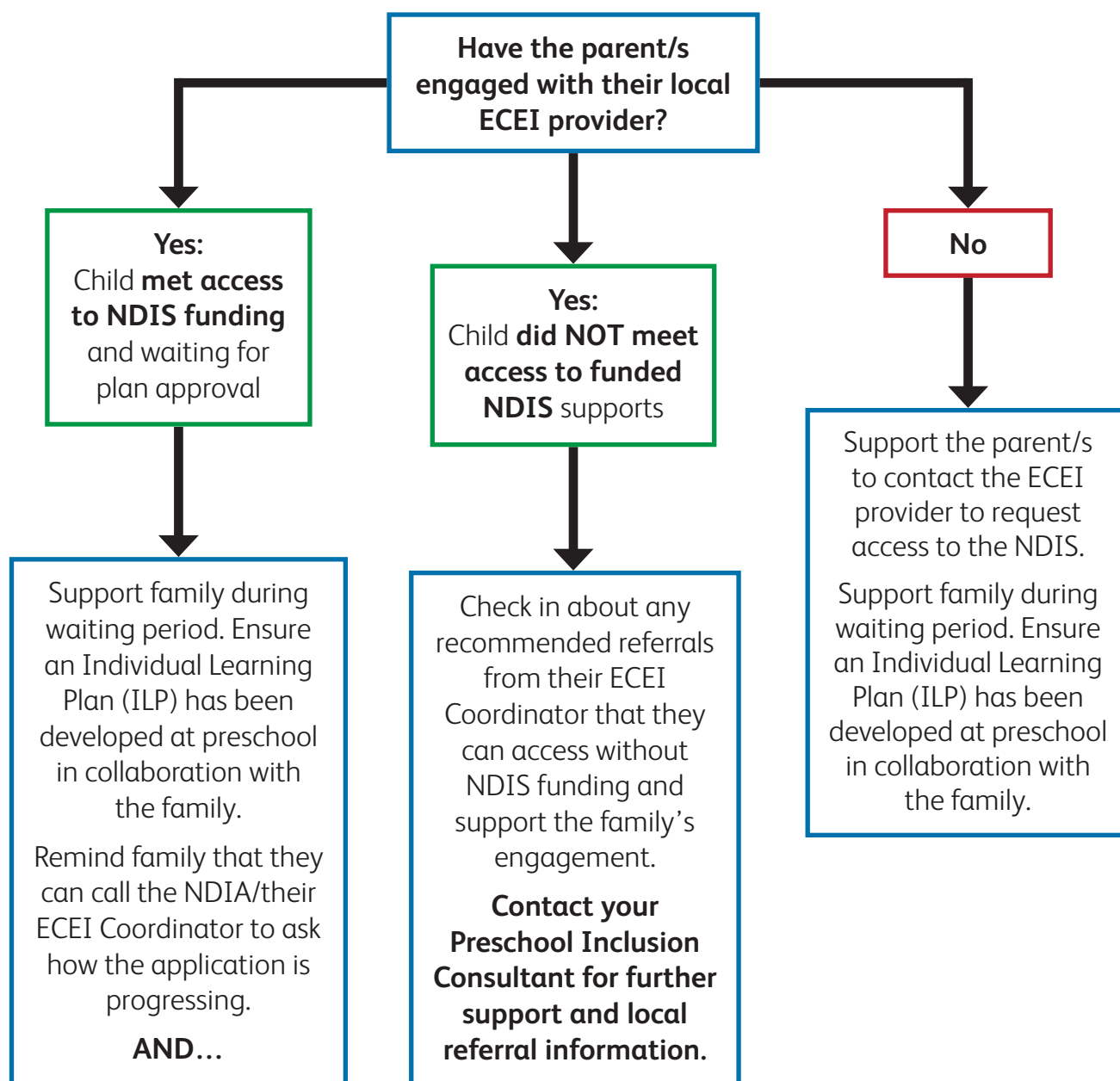


HELP FOR:

A child with a **diagnosed disability** and **no NDIS plan**



For information about the National Disability Insurance Scheme (NDIS) and the Early Childhood Early Intervention (ECEI) approach for children under 7 years old:

<https://www.ndis.gov.au/understanding>

Remember your **Preschool Inclusion Consultant** is available to discuss your needs and assist you with any step in the process.