

Sector Capacity Building Program



Inclusion Ready News

Issue 2 – 4 August 2020



IN THIS ISSUE

Welcome to the 2nd edition of the KU Sector Capacity Building Program newsletter.

In this edition we will share some key information and resources about transition to school for children with additional needs, reminders and information about other resources your team can access.

We are aware this continues to be an unusual time for all of us, and we appreciate the many demands experienced by educators in preschools. Our team are pleased to be able to continue to support you with your inclusion needs.

CONTENTS

Upcoming Term 3 free webinars	2
Information about transition to school for preschools	2
Why develop a Preschool Inclusion Readiness Plan?	3
'Hot Topics in Inclusion' webinar series – recordings now available	4
2020 Preschool Profiles coming soon	4
Funding cut-off date reminders	4
Inclusion podcast series coming soon	5
COVID-19 resource for children	5

Tell us what you think

A reminder about the online survey asking to tell us what you want from the Sector Capacity Building Program. You can complete the survey here: <https://www.surveymonkey.com/r/SCBPsurvey>

Upcoming Term 3 free webinars

These upcoming webinars are provided for preschools supported by the KU Sector Capacity Building Program:

- ▶ **Critical Reflection for Inclusion** – Presented by Jan Faulkner and Marg McLeish, KU Professional Learning
Wednesday 2 September and 9 September, 4:00pm – 5:00pm
- ▶ **Introduction to Key Word Sign** – Presented by Rachel Knights, KU Speech Pathologist
Monday 21 September, 4:00pm – 5:00pm

Information about transition to school for preschools

Preschool educators are uniquely placed to support families in their child's transition to school due to the strong trusting relationships they develop with parents and carers. Educators can share critical information about children's learning within a group context and can support families to advocate for their child. Educators also play a vital role in linking families with accurate information about school options, enrolment processes and what to expect at school in order to help the transition process to be as seamless as possible.

A timeline for children with disabilities or additional needs

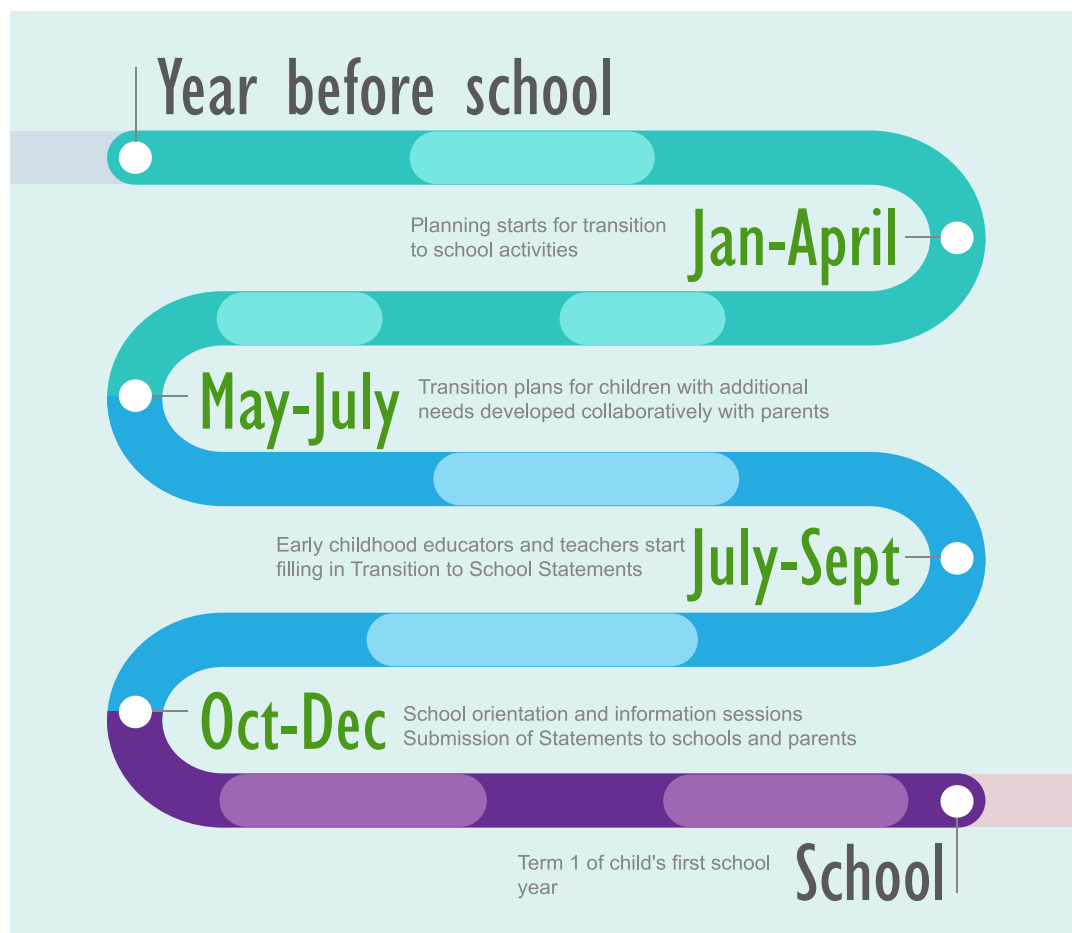


Image from:
<https://education.nsw.gov.au/content/dam/main-education/early-childhood-education/working-in-early-childhood-education/media/documents/T2S-Guide-for-Educators-2018.pdf>

Did you know that if a child has a physical disability, families should approach their local school two years prior to their child's school entry? This allows sufficient time should capital works such as an access ramp be required at the school.

Term 3 focus for preschools in supporting transition to school for children with additional needs

At this time of year, it is a good idea to check in with families of children with disabilities or additional needs to see whether they have approached their local school and any other schools they are interested in applying for. This will allow sufficient time to complete any forms and share information and recent reports for school entry in 2021. If families have not yet made contact with schools, preschools may need to support families with this process. Due to COVID-19 restrictions, it is worth being aware that families may not be able to visit for a face to face tour of schools, and families may need to gather information about schools over the phone and online.

Some transition to school resources for educators

- ▶ [Transition to School Statement and Guide for Educators \(NSW Department of Education\)](#)
- ▶ [‘A Special Place’ \(NSW Department of Education\)](#) – story about going to school
- ▶ [Transition to school: A collaborative effort \(ACECQA\)](#) – article about collaborative partnerships with families and communities
- ▶ [Continuity of Learning: A resource to support effective transition to school and school age care \(Australian Government Department of Education\)](#) – A research-based resource to support effective transition to school and school aged care
- ▶ [Ready Set School Guides \(Reimagine Australia\)](#)
Reimagine Australia (formerly Early Childhood Intervention Australia) has re-branded their Transition to School Resource into a series of four guides called ‘Ready Set School’ for the transition to school team members of a child with disability.
 - [Guide for ECEC services](#)
 - [Guide for families](#)
 - [Guide for schools](#)
 - [Guide for community services including OSHC](#)

Why develop a Preschool Inclusion Readiness Plan?

If you haven't already developed a Preschool Inclusion Readiness Plan with your Preschool Inclusion Consultant, here are some reasons to get the process started:

- ▶ The plan is devised by and owned by you – a working document that helps to keep your team cohesive and focussed. It provides strong evidence, which can be shared during your assessment and ratings visit and demonstrates that your team are actively prioritising inclusive practice and working collaboratively with your Preschool Inclusion Consultant.
- ▶ The planning process, and ongoing support provided throughout the year, contributes to the minimum eight hours of support you are entitled to each term, as set out by the Department of Education. The planning will occur via phone and/or online meetings or preschool visits when they resume.
- ▶ When you develop a plan with us, we will provide you with a certificate to display so that families and visitors such as Authorised Officers will know that you are actively focussing on inclusion at your preschool.

‘Hot Topics in Inclusion’ webinar series – Recordings now available

What educators have said about these webinars:

“Having access to these types of webinars is valuable and assists with keeping current with best practice. Without having to attend expensive workshops in person. Thank you!”

“In this COVID climate what you are offering enables us to keep connected...”

“I really liked how this was presented- that it starts with building a relationship with the child and finding out their interests and viewing their behaviour as communication and acknowledging it. It was also good to focus on what they can do, not their differences.”

The live webinar series provided in term 2 was very popular with educators. If you missed an opportunity to participate in any of the live webinars, or you would like to share with other educators in your preschool, **contact your Preschool Inclusion Consultant to ask for the recording for any of the webinars listed below to be emailed to you:**

- ▶ Webinar recording 1: I am worried about a child’s development. What next?
- ▶ Webinar recording 2: More than Belonging: Working Together to Enhance Being and Becoming
- ▶ Webinar recording 3: Playspaces®: How to promote a secure base culture within your preschool to include all children in preschool life
- ▶ Webinar recording 4: What does research tell us about inclusion in early childhood?
- ▶ Webinar recording 5: Positive Approaches to Supporting Young Children with Additional Needs and Challenging Behaviour (Parts 1 and 2)
- ▶ Webinar recording 6: Reframing our understanding of Autism Spectrum Disorder
- ▶ Webinar recording 7: Understanding Anxiety

2020 Preschool Profiles coming soon

As part of the NSW Department of Education’s requirements, your Preschool Inclusion Consultant will be in touch this term to arrange to complete your Preschool Profile for 2020.

Funding cut-off date reminders

Quarter 4 assessment cut-off dates for High Learning Support Needs and Minor Capital Works funding available through the Disability and Inclusion Program must be submitted by **5pm Thursday 20 August 2020**. You can contact your Preschool Inclusion Consultant for support with preparing funding applications.

The Quality Learning Environments program aims to support eligible preschools to improve their learning environments to positively impact experiences and outcomes for children. This may include quality improvement initiatives to enable equitable outcomes for children with disabilities. Preschools can apply for a grant of up to \$15,000. Applications open from **Monday 22 June to Friday 25 September 2020**.

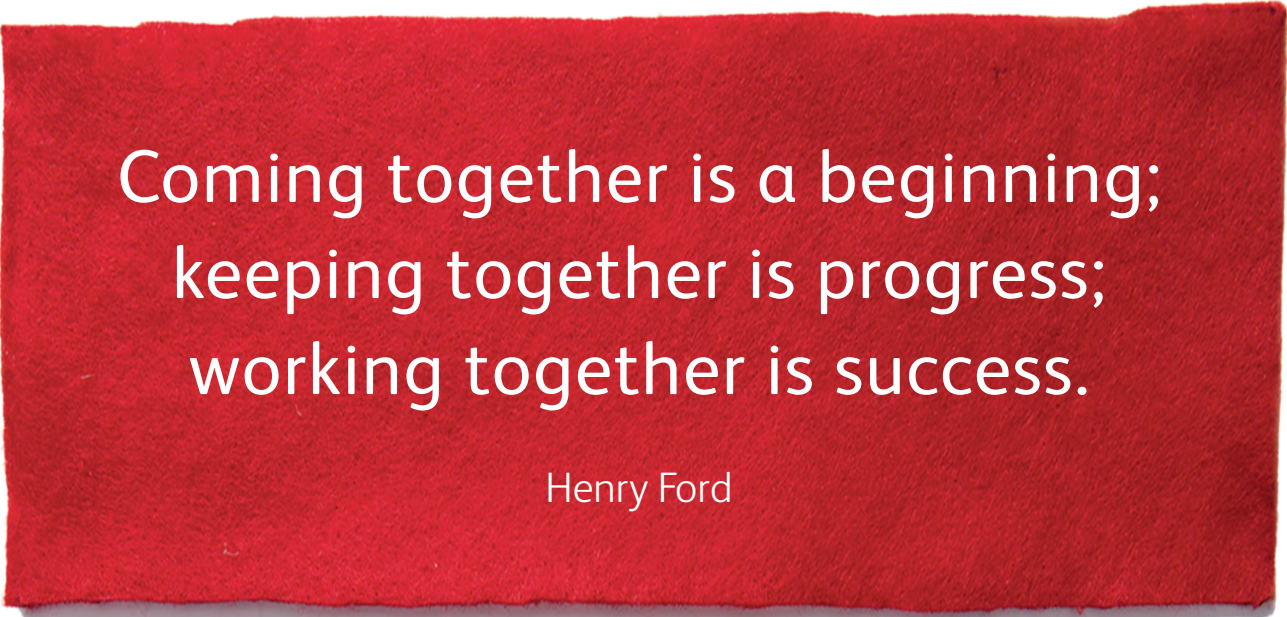
See: [Quality Learning Environments 2020 Guidelines](#).

Inclusion podcast series coming soon

Our 'Hot Topics in Inclusion' webinar series were well attended and well received, and we are currently in the process of developing a series of podcasts that will delve deeper into the topics covered by speakers.

COVID-19 resource for children

QLD Health has developed a story called 'Birdie and the Virus' which explains COVID-19 to young children. The story can be [downloaded for free](#) or you can order printed copies.



Coming together is a beginning;
keeping together is progress;
working together is success.

Henry Ford

Your Preschool Inclusion Consultant is available to support you online and over the phone at this time. Please let us know of any specific support you may be needing.

*The Sector Capacity Building Program is funded by the
NSW Government Department of Education.*

Cover photo: Drummoyne Preschool Kindergarten

*Thank you to Drummoyne Preschool Kindergarten and St Peters Community Preschool
for taking part in our recent photoshoot.*